

8 and 16 Zone Conversion Modules

Coverts Hardwire Security System to Wireless

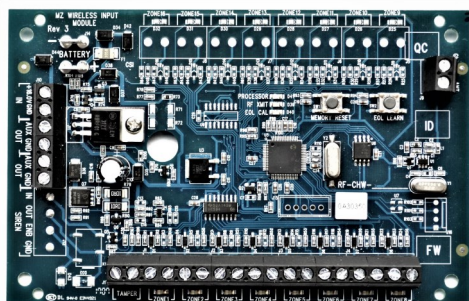
The 8 zone or 16 zone conversion module is a wireless device that enrolls into an 319.5 MHz control panel.

Each module has a unique ID number that the control panel responds to tamper and low battery conditions.

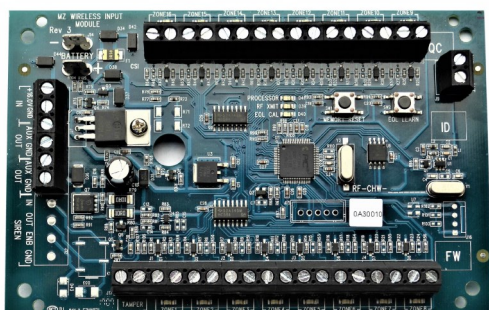
Each zone is assigned its own unique ID number for reporting purposes.

Both the 8 zone and 16 zone modules utilize a 3.0K ohm resistor for zone supervision.

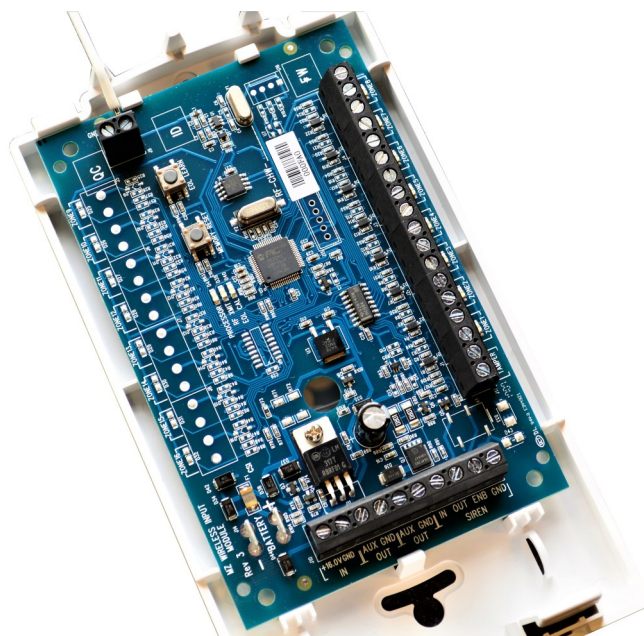
Both the RF-CHW-8-NN (8 Zone,) and RF-CHW-16-NN (16 Zone,) modules allow the conversion of up to 8 or 16 hardwire security zones to compatible 319.5 MHz. wireless control panels such as: UTC®/Interlogix®, GE®, and Qolsys®. The modules support both hardwire magnetic contacts and powered devices (12VDC,) such as motion detectors.



8 Zone Conversion Module



16 Zone Conversion Module



8 Zone Module in Enclosure

Specifications

Input Voltage:	16.0VDC plug-in transformer
Backup Battery:	12VDC 5Ah max (HWMOD-16ZONE)
Dimensions:	5.5" X 3.5"
Operating Temperature:	32 to 122F (0 to 50C)
Humidity:	95% RH Max
EOL Supervision:	3.0K Ohm
Input Zones:	8 and 6 zone modules (if used must have EOL resistor)
Zone Type	N/O or N/C compatible
Auxiliary Voltage Output:	12VDC @ 500mA
Tamper Zone:	Separate zone input for tamper
Regulatory:	FCC: 12ABBZ-RF-CHW IC (Industry Canada): 11817A-RFCHW

Part Numbers:

RF-CHW-16-NN
RF-CHW-8-NN

Installation:

Note: Battery option on RF-CHW-16-NN only.

